

Specifications

Boom

Reach (standard knuckle)	28' [8.53m]
Section Dimension	12" [305mm] x 8" [203mm] x 1/2" [13mm] wall
Pivot Pin	3" [76mm] Diameter

Boom sections are made from high tensile rectangular tubing reinforced and plug welded at all critical stress areas. Pivot pins are made from AISI 1045 material.

Stabilizers

Spread	14' [4.27m]
Pad Size	21" [533mm] x 23" [584mm]

Two (2) sets of fold down stabilizers with each stabilizer individually controlled from the operator's cab. Safety load lock valves are standard. Sub-frame and stabilizers are unitized.

Hydraulic System

Cylinders

Main Boom	(2) 6" [151mm] Bore x 43" [1092mm] Stroke x 3" [76mm] Rod
Jib Boom	(1) 7" [178mm] Bore x 48" [1219mm] Stroke x 4" [102mm] Rod
Stabilizers	(4) 6" [151mm] Bore x 24" [610mm] Stroke x 3" [76mm] Rod

All cylinder barrels are heavy wall tubing. Pistons and glands are cast iron and feature replaceable wear rings. Cylinder rods are heavy chrome plated. All cylinders feature bolt on glands for ease of maintenance.

Filtration

Two (2) suction filters with reusable 100 mesh screens.
Two (2) 10-micron absolute return filters with indicator lights.

Pumps

	Three (3) section Vane pump
Main	53 GPM [201 LPM]
Jib	53 GPM [201 LPM]
Swing	35 GPM [132 LPM]

Reservoir

120 Gallon [454 L]

Control Valves

Valves are Gresen stack type and feature integral main relief's, port relief's and anti-cavitation checks.

Operating Pressures

Main	2200 PSI [152 Bars]
Jib	2400 PSI [165 Bars]
Swing	2400 PSI [165 Bars]

Swing System

Rotation	Continuous with 9-port hydraulic swivel,
Turntable Bearing	42" [1067mm] O.D.
Swing Speed	7 RPM

Weight

Loader (less Grapple)	23,000 lbs. [10433kg]
-----------------------	-----------------------

Operator's Cab

Floor Dimensions	38" [965mm] x 60" [1524mm]
------------------	----------------------------

Standard cab features include: improved access cab door, walk up steps, heater/defroster, engine gauges, hydraulic system warning lights, insulation, tinted glass, windshield wiper/washer, dome light, horn, fire extinguisher, cigarette lighter and ashtray.

Options

Engine	Cummins and John Deere options
Booms	Hydraulic or Stationary Heel
Boom Length	30' [9.14m]
Cab	Air conditioning, AM/FM Stereo Radio with Cassette.
Other	Log and Pulpwood Grapples, Floodlights, Hydraulics and Controls for Delimber Topping Saw, Slasher and Carrier. Crawler Tracks or Trailer Mount, Stationary with Diesel or Electric Power.

Carrier

Recommended 6 x 4 tandem carrier of not less than 50,000 lbs [22680kg]. GVW with cab to axle dimension of not less than 108" [2.74m]

Specifications given were approved at the time of initial printing and are subject to change without notice and without incurring any liability.

HUSKY BRUTE

X L SERIES

XL-245



Sales and Service



PRECISION HUSKY CORPORATION
P.O. Drawer 507 - Leeds, Alabama 35094
Phone (205) 640-5181 - Fax (205) 640-1147 - Email: sales@precisionhusky.com



PRECISION HUSKY CORPORATION

www.precisionhusky.com

Engineered for Performance, Built for Endurance

P.O. Drawer 507 • Leeds, Alabama 35094 • Phone (205) 640-5181 • Fax (205) 640-1147 • Email: sales@precisionhusky.com

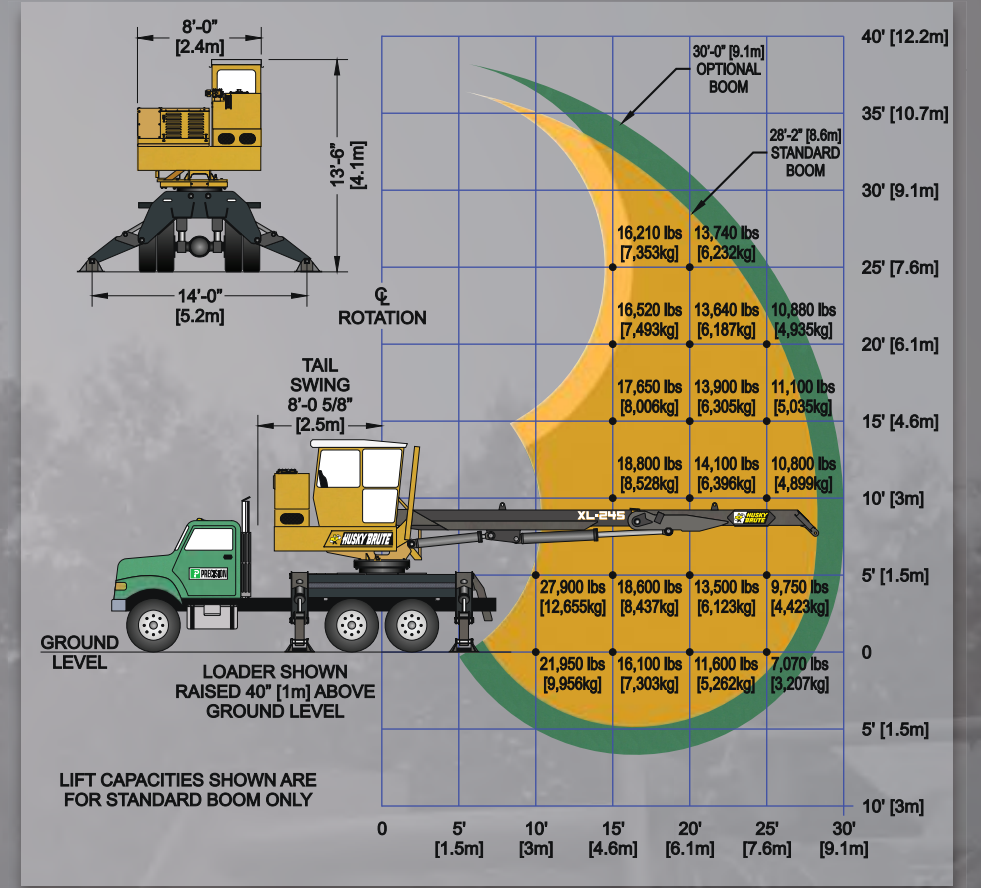
HUSKY BRUTE

XL SERIES
XL-245

The Husky XL-245 weighs in at 23,000 lbs; it has a lift capacity of nearly 14 tons at ten feet and over 4 tons at full extension of 27 feet. Even more improvements have been made to the XL series including new cylinder design, improved operator's cab and hydraulics for cooler operation.



The Husky XL series is engineered to be highly responsive with a smooth powerful swing with perfect balance. They are the heaviest built in the industry and outweigh the competitor's model for model. Routine service is fast with an easy access design, like centralized hydraulic pressure checks, turntable bearing greasing from the operator's cab. Husky boasts the largest steel booms available with super heavy-duty sub frames. Husky owners know they are built to last.



HUSKY: (hŭsk'ē) adj. -Strongly Built. Beefy, Brawny, Burly, Gigantic, Hefty, Herculean, Mighty, Muscular, Powerful, Rugged, Stocky, Stout, Strong, Sturdy, Thickset, Well-Built.

Options: All Husky models are available for trucks, stationary electric, rubber tire self propelled, and trailer-mounts. Husky provides the hydraulic power and control valves, oil lines and couplings for any major manufacturer's delimiters or slashers. We will custom mount on your choice of trailer.



Heavy-Duty Cylinders

Designed for less friction and smoother operation. Pistons and glands are cast iron and feature replaceable wear rings. All cylinders feature bolt on glands for ease of maintenance.



Improved Cab Design

Improved access cab door, 38" x 60" floor dimensions, heater/defroster, engine gauges, hydraulic system, warning lights, insulation, tinted glass, windshield wiper/washer, dome light, horn, fire extinguisher, cigarette lighter and ashtray.

NEW OPTION

Load Sensing Hydraulic System "Power-on-demand"

- Significant energy savings with reduced fuel consumption.
- Simultaneous flow and power to all hydraulic functions.
- More responsive controls with fine controllability.
- Smoother operation and maximum reliability.
- Improved overall system performance.